

# KA-9011

1-Port, 360 Degree, Omni Antenna for Small Cells

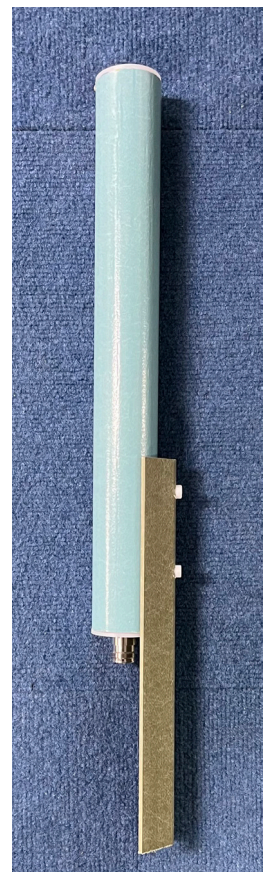
## Kaelus Next Generation Base Station Antennas

- Vertical Polarized
- Super compact size
- Designed for 617-6000MHz special applications
- Low PIM design
- Sturdy design

GENERAL	R1
Frequency Range [MHz]	617-6000MHz
Gain [dBi]	2.1dBi (typical)
Polarization [°]	Vertical
Azimuth Beamwidth [°]	360
Electrical Downtilt [°]	0
Ports Per Band	1

## Specifications and Layouts

MECHANICAL SPECIFICATIONS	
Antenna Dimensions: Length, Diameter [in]	18 x 2
Net Weight (Antenna) [lb]	3
Connector Type	N female or 4.3-10 Female
Connector Quantity	1
Connector Position	Bottom
Equivalent Flat-Plate Area [sq ft]	0.18
Survival Wind Speed (without ice) [mph]	200
Radome Material	Fibre glass
Radome Color [RAL]	Horizon Blue
Lightning Protection	DC Ground



# KA-9011

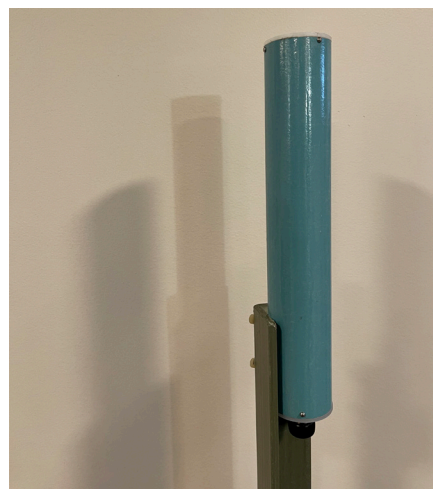
1-Port, 360 Degree, Omni Antenna for Small Cells

ELECTRICAL SPECIFICATIONS	LB R1/R2
Frequency Range [MHz]	617-6000
Gain, Typical [dBi]	2.1
Azimuth Beamwidth [°]	360
Elevation Beamwidth [°]	60.0
Electrical Downtilt [°]	0
Polarization [°]	Vertical
Impedance [Ω]	50
VSWR, typical	< 1.9:1
Passive Intermodulation at 2x43dBm [dBc]	< -153
Maximum Effective Power Per Port [W]	100

SHIPPING AND ORDER INFORMATION	
Packing Size: Length, Width, Depth [in]	TBD
Shipping Weight [lb]	5
With 4.3-10 female connector	KA-9011-0001
With N female connector	KA-9011-0002



Ideas for concealment solutions (owl not included).



Ideas for concealment solutions.

All specifications are subject to change without notice. Visit [www.kaelus.com](http://www.kaelus.com) for the most current data sheets.