

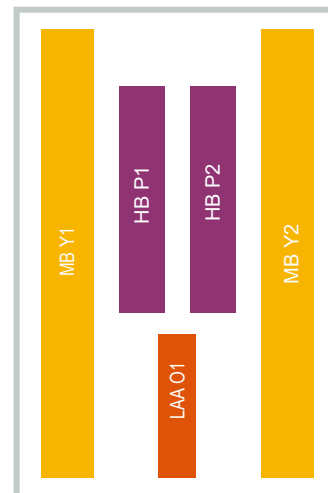
P6MPBF01

10-Port, 65 Degree, Small Cell Panel Antenna

Kaelus Next Generation Base Station Antennas

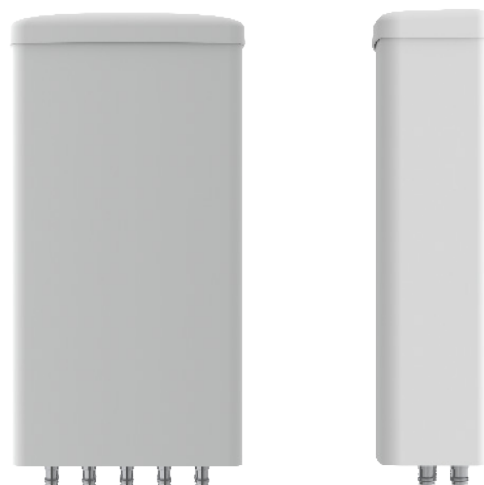
- Innovative slotted disc antenna technology
- 5GHz U-NII-1 Compliant @ 1W Input

GENERAL	MB Y1/Y2	HB P1/P2	LAA O1
Frequency Range	1695-2690	3300-4200	5150-5925
Gain Over All Tilts	12.5	13.0	5.5
Polarization	X	X	X
Azimuth Beamwidth	65	65	65
Electrical Downtilt [°]	2	2	2
Ports Per Band	4	4	2



Specifications and Layouts

MECHANICAL SPECIFICATIONS	
Antenna Dimensions: Length, Width, Depth [inch mm]	18x12.0x4.7 457x305x119
Net Weight (Antenna) [lbs kg]	10.5 4.8
Connector Type	4.3-10 female
Connector Quantity	10
Connector Position	Bottom
Windload, Calculation* [mph km/h]	93.2 150
Windload, Maximum [lbf N]	40 178
Survival Wind Speed [mph km/h]	150 241
Radome Material	ASA
Radome Color [RAL]	7035
Product Environmental Compliance	RoHS
Lightning Protection	Yes -
* According to EN 1991-1-4:2005+A 1:2010	



P6MPBF01

10-Port, 65 Degree, Small Cell Panel Antenna

ELECTRICAL SPECIFICATIONS	MB Y1/Y2					HB P1/P2	LAA O1
Frequency Range [MHz]	1695-1780	1850-1995	2095-2200	2300-2400	2496-2690	3300-4200	5150-5925
Gain, Average [dBi]	11.5	11.8	12.3	12.8	13.5	13.0	5.5
Azimuth Beamwidth [°]	68.0 ±5.0	66.0 ±5.0	65.0 ±5.0	63.0 ±5.0	60.0 ±5.0	60.0 ±5.0	75.0 ±5.0
Elevation Beamwidth [°]	23.0 ±4.0					18.0 ±3.0	30.0 ±5.0
Electrical Downtilt [°]	2					2	2
Elevation Downtilt Deviation [°]	1	1	1	1	1	1	2
Front-to-Back Ratio, Total Power, ±30° [dB]	23	23	23	25	25	25	23
First Upper Side Lobe Suppression [dB]	17	17	17	17	17	16	15
Upper Side Lobe Suppression [dB]	15	15	15	15	15	15	15
Polarization [°]	±45					±45	±45
Impedance [Ω]	50					50	50
VSWR	< 1.5:1					< 1.5:1	< 1.5:1
Return Loss [dB]	< -14.0					< -14.0	< -14.0
Cross Polar Isolation [dB]	25					25	25
Interband Isolation [dB]	25					25	25
Passive Intermodulation (PIM) 3rd order, 2x20W [dBc]	< -153					< -150	-
Maximum Effective Power Per Port [W]	100					50	10

SHIPPING AND ORDER INFORMATION		
Packing Size: Length, Width, Depth [inch mm]	24x18x11 610x457x279	
No Bracket: Shipping Weight [lbs kg], P/N	20.0 9.1	P6MPBF01-V1-P1
Fixed Bracket: Shipping Weight [lbs kg], P/N	29.8 13.6	P6MPBF01-V1-P2
Tilt Bracket: Shipping Weight [lbs kg], P/N	33.1 15.0	P6MPBF01-V1-P3

ENVIRONMENTAL COMPLIANCE	
ETSI EN300019-1-1 for Storage	Class 1.2
ETSI EN300019-1-2 for Transportation	Class 2.3
ETSI EN300019-1-4 for Environmental Conditions	Class 4.1E
Cold Temperature Survival [°F °C]	-40 -40
Hot Temperature Survival [°F °C]	140 60



Network planning files and datasheet in NGMN XML formats are available on request by email.

Kaelus follows the definitions and recommendations per NGMN P-Basta version 12.0 (www.ngmn.org) within parameters shown on this datasheet.

All specifications are subject to change without notice. Visit www.kaelus.com for the most current data sheets.

