

ACE-1000A Quick Start

Kaelus Analyzer Calibration Extender for iPA and iTA

The following steps outline how to use the Kaelus ACE-1000A to test and extend the calibration date of your iPA and iTA PIM instrument.

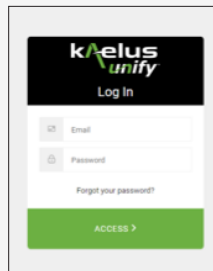
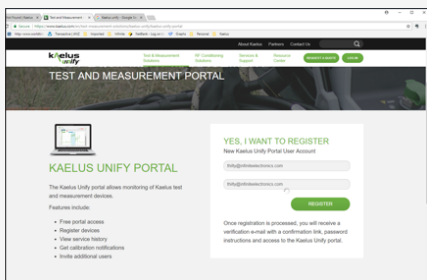
In order to use the ACE-1000A, it is required to create an account on the Kaelus Unify Portal, register your instrument and setup a payment method. To create your account, please follow the Kaelus Unify Web Portal Quick Start Guide.

Once your account is created and devices are registered, download the Kaelus Unify App and the Kaelus Unify App wizard will guide you through the ACE procedure and extend your calibration. *Note: Calibration of each instrument can be extended to a maximum of 12 months from the date of successful calibration.*



1. UNIFY ACCOUNT SETUP

- It is a requirement of ACE to setup a unify account
- To be able to view the Certificate of Calibration, obtain software updates and calibration you will need to register each instrument on Unify

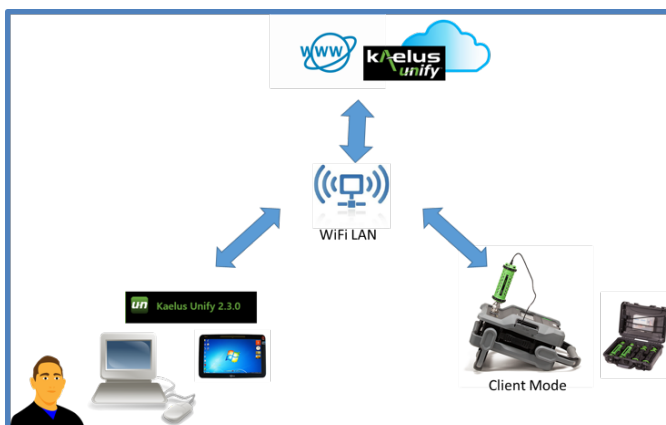


A. Set up a Unify account: <https://www.kaelus.com/en/test-measurement-solutions/kaelus-unify/kaelus-unify-portal>

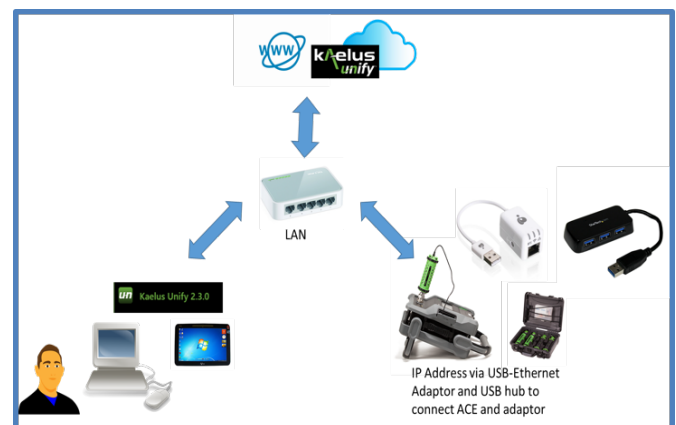
B. Download Kaelus Unify Windows Software from the Kaelus website <https://www.kaelus.com/en/resource-center/software-downloads>, install and sign-in using your Kaelus Web Portal credentials

2. iPA/iTA CONNECTION OPTIONS

A. WiFi LAN



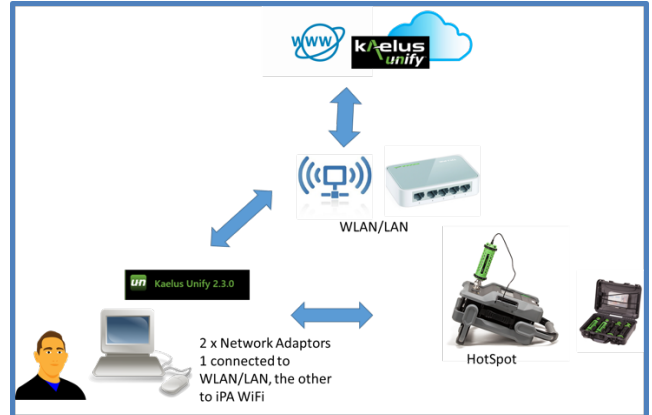
B. Ethernet LAN



C. Hot Spot LAN



D. Multiple Network Adaptors



Refer to iPA Series Operating Manual, Section 2 Connection Options
<https://www.kaelus.com/en/resource-center/user-manuals-and-software-downloads>

3. PREPARATION BEFORE CALIBRATION

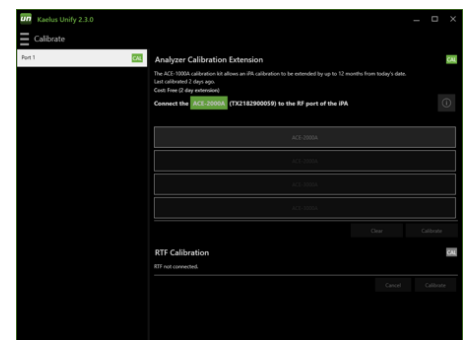
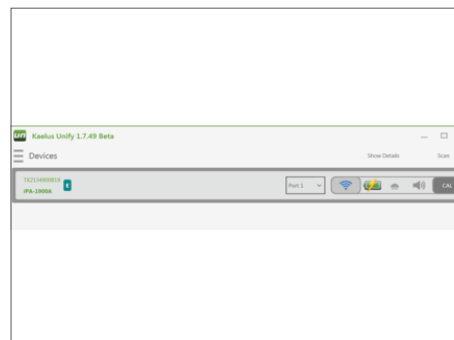
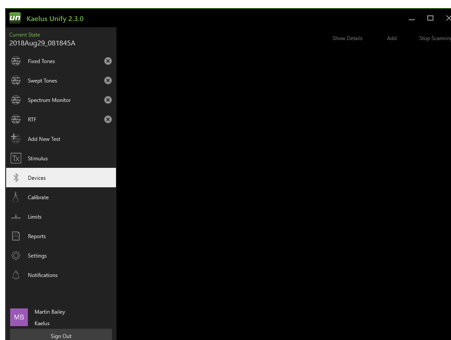
Please ensure all connectors are clean and free of debris prior to calibration. The correct connector torque (25Nm) is also vital for calibration so please make use of the torque wrench supplied in the ACE kit.

The environment for calibration must be between 20 and 30 degrees Celsius, 68 and 86 degrees Fahrenheit.

Please ensure that RTF Modules, cables and adaptors are removed from the test port prior to calibration. Only the connector saver should be attached to the test port during calibration. It is recommended that the connector saver be replaced if there are signs of wear and tear.

4. ACE PROCEDURE WITH UNIFY

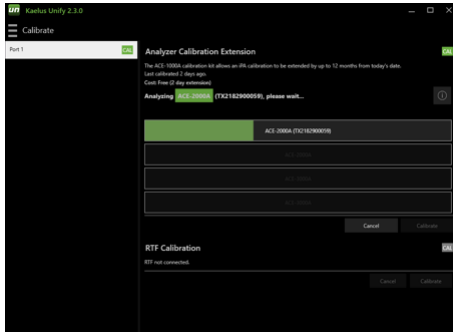
Log into the Kaelus Unify application and proceed to the Devices tab



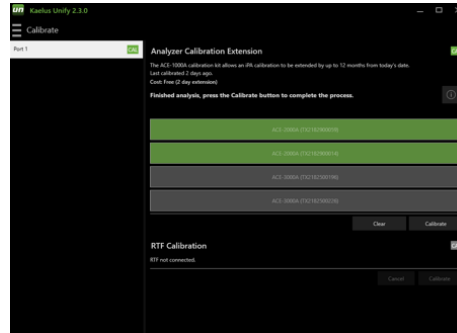
1. Ensure the iPA or iTA is connected via one of the connection options. Scan for the iPA or iTA in device call out if it is not already shown. Connect by clicking on the blue Wi-Fi symbol on the device. Click CAL.

2. Click CAL then click on Quote in the application to display. Identify the amount to be charged to your credit card or account. Connect the first standard from the ACE kit.

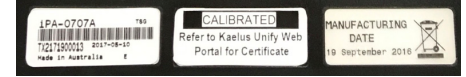
3. Click on the highlighted button in the application to begin analyzing the standards.



4. Continue through all four standards from the ACE kit. Progress is indicated by the progress bars on each standard.



5. Once all Standards tests (two green, two black) have been performed and are successful, calibrate button will highlight to perform the calibration. This is when the credit card or account will be charged.



6. Replace calibration due label with new label provided in the ACE-1000A kit

7. Upon successful calibration, navigate to the Unify Portal to obtain the Certificate of Calibration <https://www.kaelusunify.com/login>

If your instrument fails the calibration you will not be charged and we recommend to follow the troubleshooting guide or contact us at www.kaelus.com for additional technical support.

NOTE – Your instrument may need to be sent to a Kaelus Service Center for repair if the ACE calibration fails multiple times.