

# M0MPBF01

10-Port, 360 Degree, Small Cell Canister Antenna

## Kaelus Next Generation Base Station Antennas

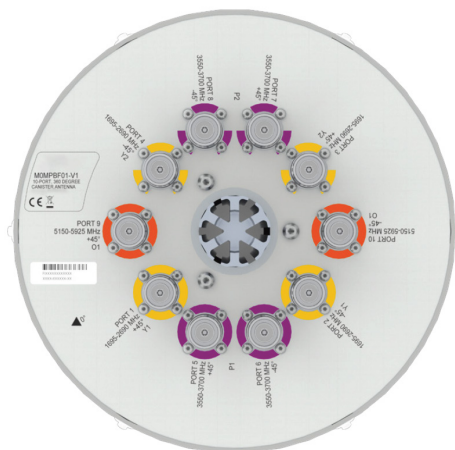
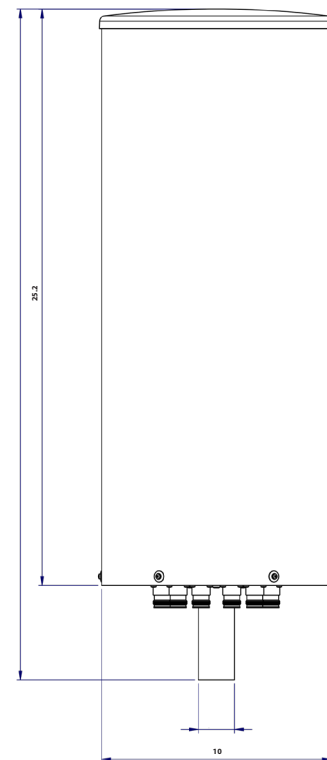
- Innovative Ultra Wide Band Slotted Disc Antenna Technology
- 5 GHz U-NII-1 Compliant @ 1 W Input.



| GENERAL                   | MB Y1/Y2  | HB P1/P2  | HB O1     |
|---------------------------|-----------|-----------|-----------|
| Frequency Range           | 1695-2690 | 3550-3700 | 5150-5925 |
| Gain Over All Tilts [dBi] | 10.0      | 8.5       | 5.5       |
| Polarization              | X         | X         | X         |
| Azimuth Beamwidth [°]     | 360       | 360       | 360       |
| Electrical Downtilt [°]   | 2         | 2         | 2         |
| Ports Per Band            | 4         | 4         | 2         |

## Specifications and Layouts

| MECHANICAL SPECIFICATIONS                 |           |
|---|-----------|
| Antenna Dimensions: Length, Diameter [in] | 25.2 x 10 |
| Net Weight (Antenna) [lb]                 | 15.6      |
| Connector Type                            | 4.3-10    |
| Connector Quantity                        | 10        |
| Connector Position                        | Bottom    |
| Windload, Calculation [mph]               | 93.2      |
| Windload, Maximum [lbF]                   | 19        |
| Survival Wind Speed [mph]                 | 150       |
| Radome Material                           | ASA       |
| Radome Color [RAL]                        | 7035      |
| Product Environmental Compliance          | RoHS      |
| Lightning Protection                      | DC Ground |



# M0MPBF01

10-Port, 360 Degree, Small Cell Canister Antenna

| ELECTRICAL SPECIFICATIONS              | MB Y1/Y2     |           |           |           |           | HB P1/P2     | HB O1        |
|--|--------------|-----------|-----------|-----------|-----------|--------------|--------------|
| Frequency Range [MHz]                  | 1695-1780    | 1850-1995 | 2095-2200 | 2300-2400 | 2496-2690 | 3550-3700    | 5150-5925    |
| Gain, Average [dBi]                    | 8.8          | 9.0       | 9.9       | 10.5      | 11.0      | 8.5          | 5.5          |
| Azimuth Beamwidth [°]                  | 360 (pseudo) |           |           |           |           | 360 (pseudo) | 360 (pseudo) |
| Elevation Beamwidth [°]                | 19.0 ±4.0    |           |           |           |           | 20.5 ±2.0    | 24.0 ±3.0    |
| Electrical Downtilt [°]                | 2            |           |           |           |           | 2            | 2            |
| Elevation Downtilt Deviation [°]       | 1            | 1         | 1         | 1         | 1         | 1            | 2            |
| First Upper Side Lobe Suppression [dB] | 17           | 17        | 17        | 17        | 17        | 16           | 15           |
| Upper Side Lobe Suppression [dB]       | 15           | 15        | 15        | 15        | 15        | 15           | 15           |
| Polarization [°]                       | ±45          |           |           |           |           | ±45          | ±45          |
| Impedance [Ω]                          | 50           |           |           |           |           | 50           | 50           |
| VSWR                                   | < 1.5:1      |           |           |           |           | < 1.5:1      | < 1.5:1      |
| Return Loss [dB]                       | < -14.0      |           |           |           |           | < -14.0      | < -14.0      |
| Cross Polar Isolation [dB]             | 25           |           |           |           |           | 25           | 25           |
| Interband Isolation [dB]               | 25           |           |           |           |           | 25           | 25           |
| Passive Intermodulation [dBc]          | < -153       |           |           |           |           | < -150       | -            |
| Maximum Effective Power Per Port [W]   | 100          |           |           |           |           | 50           | 10           |

| SHIPPING AND ORDER INFORMATION          |                   |
|---|-------------------|
| Packing Size: Length, Width, Depth [in] | 34 x 18 x 18      |
| Shipping Weight [lb]                    | 25 M0MPBF01-V1-P1 |

| ENVIRONMENTAL COMPLIANCE                       |            |
|--|------------|
| ETSI EN300019-1-1 for Storage                  | Class 1.2  |
| ETSI EN300019-1-2 for Transportation           | Class 2.3  |
| ETSI EN300019-1-4 for Environmental Conditions | Class 4.1E |
| Cold Temperature Survival [°F]                 | -40        |
| Hot Temperature Survival [°F]                  | 140        |

| ADDITIONAL ACCESSORIES (AVAILABLE TO ORDER)   |              |
|---|--------------|
| Side Pole/Wall Mount Kit (incl. cover)        | KIT-000039-P |
| Top Pole Mount Kit [2.4-6.3 in] (incl. cover) | KIT-000040-P |
| Top Pole Mount Kit [5.5-8.7 in] (incl. cover) | KIT-000041-P |



Network planning files and datasheet in NGMN XML formats are available on request by email.

Kaelus follows the definitions and recommendations per NGMN P-Basta version 10.0 ([www.ngmn.org](http://www.ngmn.org)) within parameters shown on this datasheet.

All specifications are subject to change without notice. Visit [www.kaelus.com](http://www.kaelus.com) for the most current data sheets.

