

M0MPBF02

10-Port, 360 Degree, Small Cell Canister Antenna

Kaelus Next Generation Base Station Antennas

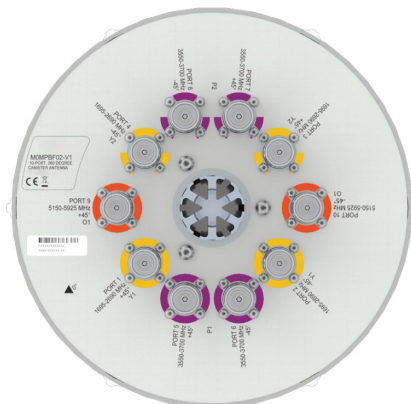
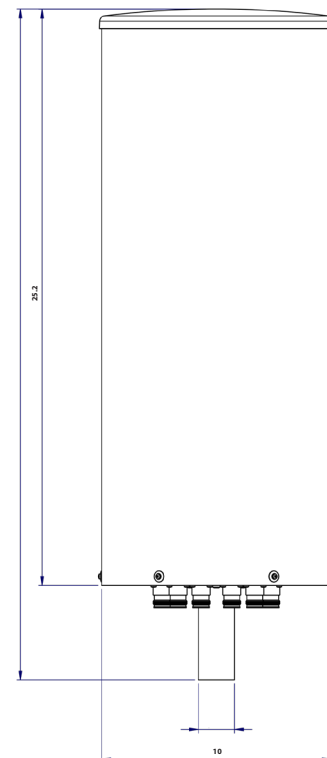
- Innovative Ultra Wide Band Slotted Disc Antenna Technology
- 5 GHz U-NII-1 Compliant @ 1 W Input.



GENERAL	MB Y1/Y2	HB P1/P2	HB O1
Frequency Range	1695-2690	3550-3700	5150-5925
Gain Over All Tilts [dBi]	9.0	8.5	5.5
Polarization	X	X	X
Azimuth Beamwidth [°]	360	360	360
Electrical Downtilt [°]	2	2	2
Ports Per Band	4	4	2

Specifications and Layouts

MECHANICAL SPECIFICATIONS	
Antenna Dimensions: Length, Diameter [in]	25.2 x 10
Net Weight (Antenna) [lb]	15.6
Connector Type	4.3-10
Connector Quantity	10
Connector Position	Bottom
Windload, Calculation [mph]	93.2
Windload, Maximum [lbf]	19
Survival Wind Speed [mph]	150
Radome Material	ASA
Radome Color [RAL]	7035
Product Environmental Compliance	RoHS
Lightning Protection	DC Ground



M0MPBF02

10-Port, 360 Degree, Small Cell Canister Antenna

ELECTRICAL SPECIFICATIONS	MB Y1/Y2					HB P1/P2	HB O1
Frequency Range [MHz]	1695-1780	1850-1995	2095-2200	2300-2400	2496-2690	3550-3700	5150-5925
Gain, Average [dBi]	8.0	8.3	9.0	9.5	10.0	8.8	5.5
Azimuth Beamwidth [°]	360 (pseudo)					360 (pseudo)	360 (pseudo)
Elevation Beamwidth [°]	29.8 ±4.0					20.5 ±2.0	24.0 ±3.0
Electrical Downtilt [°]	10					2	2
Elevation Downtilt Deviation [°]	1	1	1	1	1	1	2
First Upper Side Lobe Suppression [dB]	17	17	17	17	17	16	15
Upper Side Lobe Suppression [dB]	15	15	15	15	15	15	15
Polarization [°]	±45					±45	±45
Impedance [Ω]	50					50	50
VSWR	< 1.5:1					< 1.5:1	< 1.5:1
Return Loss [dB]	< -14.0					< -14.0	< -14.0
Cross Polar Isolation [dB]	25					25	25
Interband Isolation [dB]	25					25	25
Passive Intermodulation [dBc]	< -153					< -150	-
Maximum Effective Power Per Port [W]	100					50	10

SHIPPING AND ORDER INFORMATION	
Packing Size: Length, Width, Depth [in]	34 x 18 x 18
Shipping Weight [lb]	25 M0MPBF02-V1-P1

ENVIRONMENTAL COMPLIANCE	
ETSI EN300019-1-1 for Storage	Class 1.2
ETSI EN300019-1-2 for Transportation	Class 2.3
ETSI EN300019-1-4 for Environmental Conditions	Class 4.1E
Cold Temperature Survival [°F]	-40
Hot Temperature Survival [°F]	140

ADDITIONAL ACCESSORIES (AVAILABLE TO ORDER)	
Side Pole/Wall Mount Kit (incl. cover)	KIT-000039-P
Top Pole Mount Kit [2.4-6.3 in] (incl. cover)	KIT-000040-P
Top Pole Mount Kit [5.5-8.7 in] (incl. cover)	KIT-000041-P



Network planning files and datasheet in NGMN XML formats are available on request by email.

Kaelus follows the definitions and recommendations per NGMN P-Basta version 10.0 (www.ngmn.org) within parameters shown on this datasheet.

All specifications are subject to change without notice. Visit www.kaelus.com for the most current data sheets.

