

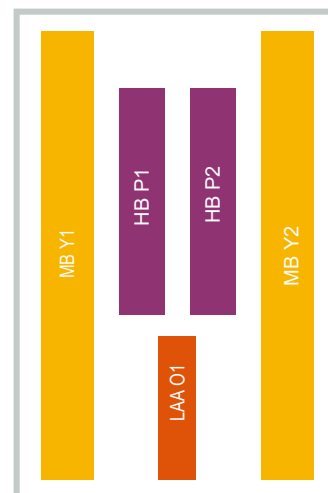
# P6MPBF01

10-Port, 65 Degree, Small Cell Panel Antenna

## Kaelus Next Generation Base Station Antennas

- Innovative Slotted Disc Antenna Technology

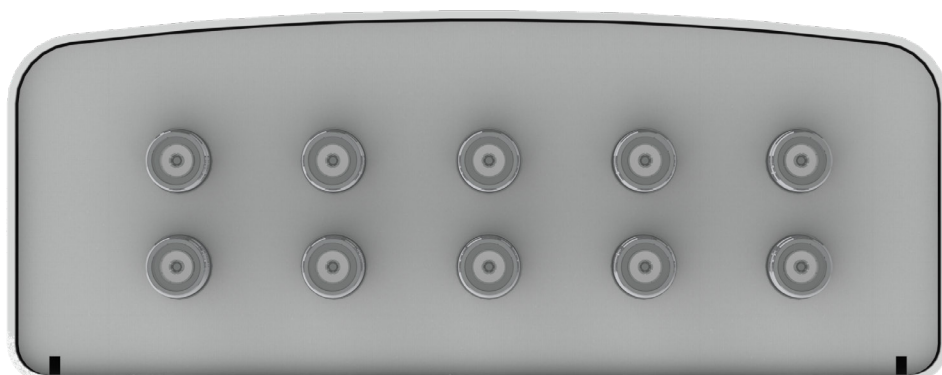
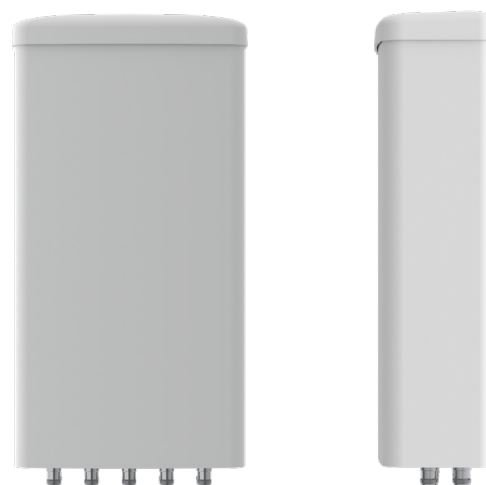
GENERAL	MB Y1	MB Y2	HB P1	HB P2	LAA O1
Frequency Range	1695-2690	1695-2690	3300-3800	3300-3800	5150-5925
Gain Over All Tilts [dBi]	12.5	12.5	12	12	5.5
Polarization	X	X	X	X	X
Azimuth Beamwidth [°]	65	65	65	65	65
Electrical Downtilt [°]	2	2	2	2	2
Ports Per Band	2	2	2	2	2



## Specifications and Layouts

MECHANICAL SPECIFICATIONS	
Antenna Dimensions: Length, Width, Depth [in]	18 x 12 x 4.7
Net Weight (Antenna) [lb]	10.5
Connector Type	4.3-10
Connector Quantity	10
Connector Position	Bottom
Windload, Calculation* [mph]	93.2
Windload, Maximum [lb]	40
Survival Wind Speed [mph]	150
Radome Material	ASA
Radome Color [RAL]	7035
Product Environmental Compliance	RoHS
Lightning Protection	DC Ground

\* According to EN 1991-1-4:2005+A 1:2010



# P6MPBF01

10-Port, 65 Degree, Small Cell Panel Antenna

ELECTRICAL SPECIFICATIONS	MB Y1/Y2					HB P1/P2	LAA O1
	1695-1780	1850-1995	2095-2200	2300-2400	2496-2690		
Frequency Range [MHz]	1695-1780	1850-1995	2095-2200	2300-2400	2496-2690	3300-3800	5150-5925
Gain, Average [dBi]	11.5	11.8	12.3	12.8	13.5	11.8	5.5
Azimuth Beamwidth [°]	68.0 ±5.0	66.0 ±5.0	65.0 ±5.0	63.0 ±5.0	60.0 ±5.0	65.0 ±5.0	65.0 ±5.0
Elevation Beamwidth [°]	19.0 ±4.0					19.0 ±1.0	25.0 ±5.0
Electrical Downtilt [°]	2					2	2
Elevation Downtilt Deviation [°]	1	1	1	1	1	1	2
Front-to-Back Ratio, Total Power, ±30° [dB]	25	25	25	25	25	25	25
First Upper Side Lobe Suppression [dB]	17	17	17	17	17	16	15
Upper Side Lobe Suppression [dB]	15	15	15	15	15	15	15
Polarization [°]	±45					±45	±45
Impedance [Ω]	50					50	50
VSWR	< 1.5:1					< 1.5:1	< 1.5:1
Return Loss [dB]	< -14.0					< -14.0	< -14.0
Cross Polar Isolation [dB]	25					25	25
Interband Isolation [dB]	25					25	25
Passive Intermodulation [dBc]	< -153					< -150	-
Maximum Effective Power Per Port [W]	100					50	10

SHIPPING AND ORDER INFORMATION		
Packing Size: Length, Width, Depth [in]	24 x 18 x 11	
Shipping Weight [lb]	20	P6MPB01

ENVIRONMENTAL COMPLIANCE	
ETSI EN300019-1-1 for Storage	Class 1.2
ETSI EN300019-1-2 for Transportation	Class 2.3
ETSI EN300019-1-4 for Environmental Conditions	Class 4.1E
Cold Temperature Survival [°F]	-40
Hot Temperature Survival [°F]	140



Network planning files and datasheet in NGMN XML formats are available on request by email.

Kaelus follows the definitions and recommendations per NGMN P-Basta version 10.0 ([www.ngmn.org](http://www.ngmn.org)) within parameters shown on this datasheet.

All specifications are subject to change without notice. Visit [www.kaelus.com](http://www.kaelus.com) for the most current data sheets.

