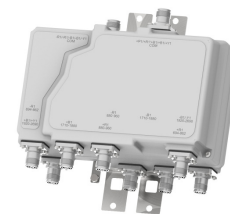




MI-757nn

Quadruplexer

700-800/900/1800/2100-2600 MHz



MASS™

Microdata Advanced Site Solutions

With our expertise in site system design we are able to provide a solution for any site sharing or upgrade scenario.

Our focus area is RF-filter based solutions including combiners, multi band TMAs, di-, tri- and quadruplexers.

Our product portfolio supports all frequencies for mobile communication bands ranging from 450 MHz to 6 GHz.

Site and network sharing makes it cost efficient to reach sparsely populated areas where new subscribers can contribute to revenue.

MASS™

Advantage

Increases coverage
more traffic & higher ARPU

Increases capacity
more traffic & higher ARPU

Reduces the cost
of network expansion

Minimizes
site acquisition issues

Specifications

Port 1 (800) - Common		
Frequency Band	694 - 862 MHz	
Insertion Loss	0.2 dB *, 0.5 dB max	
Return Loss, normal modes, all ports	> 18 dB	
Rejection 880 - 2690 MHz	> 50 dB (>30 dB 900 RX)	
Continuous Average Power	250 W, max 500 W combined on common port	
Intermod. (IM3), 2x43 dBm TX Carrier	-117 dBm	
Port 2 (900) - Common		
Frequency Band	880 - 960 MHz	
Insertion Loss	0.2 dB *, 0.4 dB max	
Return Loss	> 18 dB	
Rejection 790 - 862 MHz	> 50 dB TX >30 dB RX	
Rejection 1710 - 2170 MHz	50 dB	
Rejection 2300-2400 MHz	50 dB	
Rejection 2500-2690 MHz	50 dB	
Continuous Average Power	250 W, max 500 W combined on common port	
Intermod. (IM3), 2x43 dBm TX Carrier	-117 dBm	
Port 3 (1800) - Common		
Frequency Band	1710 - 1880 MHz	
Insertion Loss, 1710 - 1880 MHz	0.2 dB *, 0.6 dB max	
Return Loss	> 18 dB	
Rejection 790 - 960 MHz & 1920 - 2690 MHz	50 dB	
Continuous Average Power	250 W, max 500 W combined on common port	
Intermod. (IM3), 2x43 dBm TX Carrier	-117 dBm	
Port 4 (2100-2600) - Common		
Frequency Band	1920 - 2690 MHz	
Insertion Loss, 1920 - 2690 MHz	0.2 dB*, 0.7 dB max	
Return Loss	> 18 dB	
Rejection 790 - 1880 MHz	50 dB	
Continuous Average Power	250 W, max 500 W combined on common port	
Intermod. (IM3), 2x43 dBm TX Carrier	-117 dBm	
Environmental		
Operating Temperature Range	-40° to +65°C -40 to +149°F	
Environmental	ETS 300 019-1-4 Class 4.1E	
Ingress Protection	IP68	
Safety	IEC/EN 62368-1	
Electrical		
		With Auto-Sense
DC By Pass	3 A	2 A, drop max 2.4 V
AISG pass	Yes	
AISG RL		>12 dB
AISG Loss		< 1dB
Lightning Protection		10 kA 8/20 μs
Input Voltage Power		8-30 V max 0.3 W
Mechanical		
	Single Mount	Dual Mount
Dimensions (WxHxD)	267x160x58 mm 10.5x6.3x2.3 in	267x160x116 mm 10.5x6.3x4.6 in
With Auto-Sense	267x160x72 mm 10.5x6.3x2.8 in	267x160x138 mm 10.5x6.3x5.4 in
Volume	2.5 l	5.0 l
With Auto-Sense	3.0 l	5.8 l
Weight	4 kg 8.82 lb	6 kg 13.23 lb
Connectors	See Selection Guide	
Mounting(Supporter Pole Diameter: 40-140mm)	Hose clamps or wall mount	
Colour	NCS 1502-R (light grey)	
Bracket	Included	
Shipping Information		
	Single Mount	Dual Mount



MI-757nn

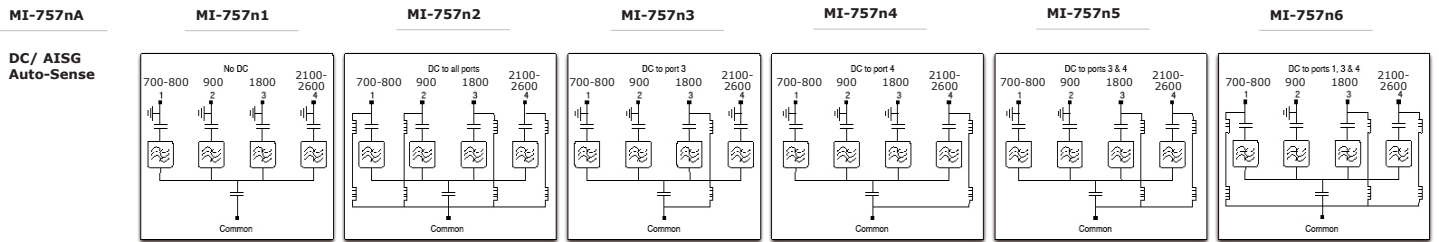
Quadruplexer

700-800/900/1800/2100-2600 MHz

Selection Guide

		Connector (F)	
		7/16	4.3-10
Mount	Single	MI-7570n	MI-7573n
	Dual	MI-7571n	MI-7574n

Block Diagram



DC/AISG

	700-800	900	1800	2100-2600
MI-757nA	Auto-Sense			
MI-757n1	Block	Block	Block	Block
MI-757n2	Pass	Pass	Pass	Pass
MI-757n3	Block	Block	Pass	Block
MI-757n4	Block	Block	Block	Pass
MI-757n5	Block	Block	Pass	Pass
MI-757n6	Pass	Block	Pass	Pass

Auto-Sense Priority

	700-800	900	1800	2100-2600
MI-757nA.1	FPO	FPO	FPO	FPO
MI-757nA.2	XOR	XOR	XOR	XOR
MI-757nA.3	4	3	2	1
MI-757nA.4	1	2	3	4
MI-757nA.5	2	4	1	3
MI-757nA.6	2	4	3	1
MI-757nA.7	2	3	4	1

Mechanical Drawing

The diagram is showing MI-7574A

